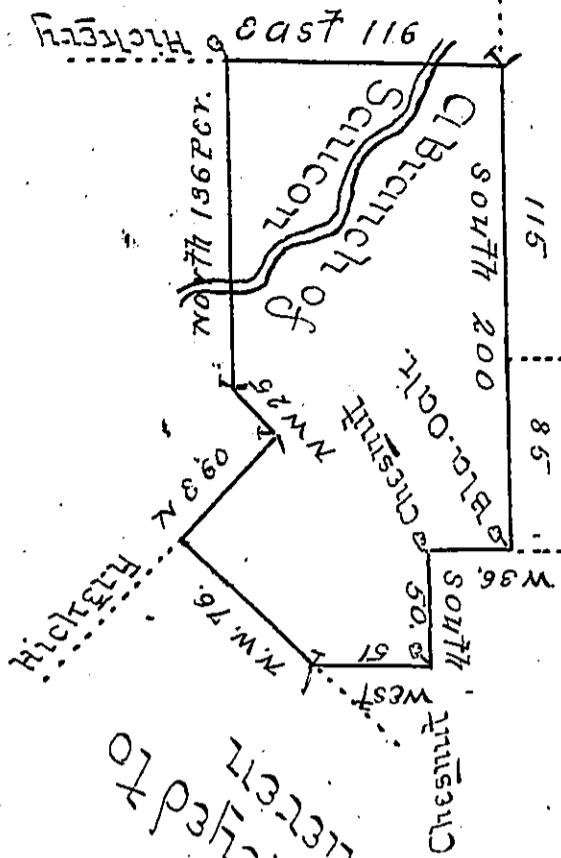


Michl Smith

Henry Bittin

Conrad Wilsall



(obl. ob
obl. use

Land Surveyed to
Balfour Stewart

By Virtue of a Warrant from the Proprietaries
 Dated the Eleventh Day of September 1738 Survey-
 ed the Twenty fourth day of the same Month to
 Michael Stocker the above Described Tract of
 Land situate on a branch of Saucon Creek in
 the County of Bucks Containing One hundred &
 Fifty Nine Acres & One hundred perches with
 Allowance of six P Ct

This part gone

IN TESTIMONY that the above is a copy of the original remaining on file in
 the Department of Internal Affairs of Pennsylvania, made
 conformably to an Act of Assembly approved the 16th day of
 February, 1833, I have hereunto set my Hand and caused
 the Seal of said Department to be affixed at Harrisburg,
 this twenty first day of March 1904.

James W. Brown
 Secretary of Internal Affairs.